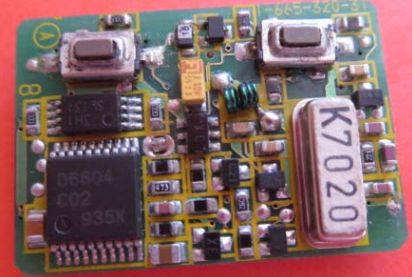


This procedure for “*Subaru Impreza, Legacy, Forester remote key – Worn out button replacement procedure*” was prepared by Polmex, Western Australian innovative Engineering Company, specializing in design and manufacture of special purpose Silicone products. Supplying to the market Silicone Buttons for worn out remote keys of various makes and models: Hyundai, Holden, Commodore, Ford, Mitsubishi, Nissan, Rover, Land Rover, Peugeot, BMW, Jeep, Mazda, Rover, Kia, Jeep, Mercedes and more...

For Orders please visit us on line at [www.polmex.com.au](http://www.polmex.com.au)

**Polmex replacement Buttons/Pads are made from LSR Silicone and will not break, due to deteriorating effects of sunlight, water and chemicals commonly encountered in service such as Detergent, Oil, and Methanol. Our silicone buttons are flexible and will not deform, change shape, degrade and break over period of time. They are much more durable than originals and are designed to last.**

will fit remote with this

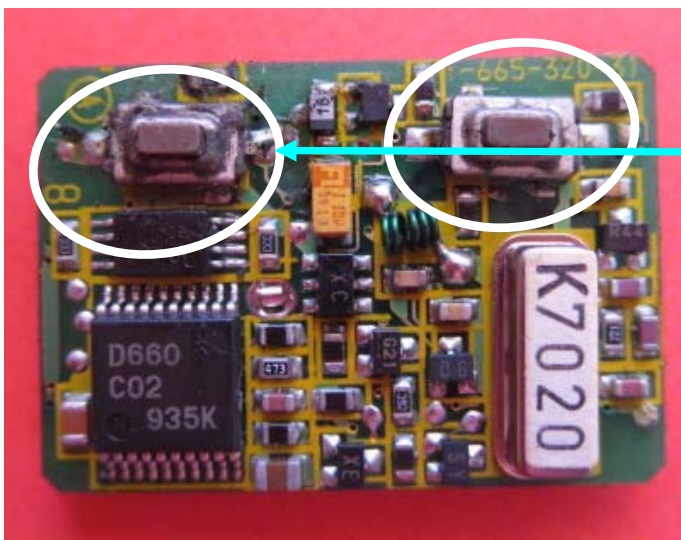


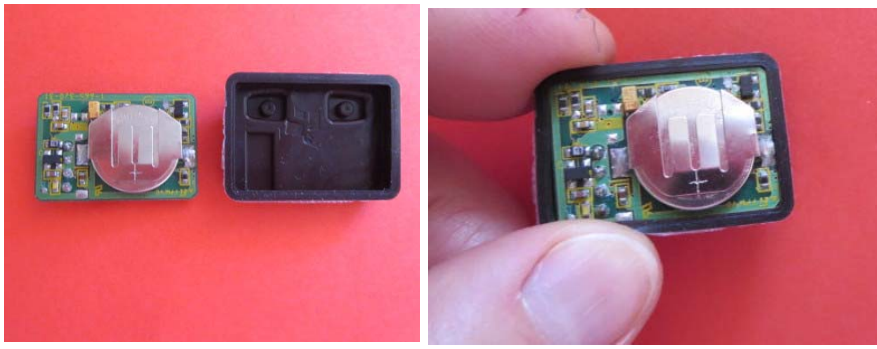
type of electronic board



### Button Replacement Procedure

1. Unscrew small screw at the back of remote to end up with 2 parts: One consisting of hard shell and second one with electronic component and rubber key button pad.
2. Remove internal components and separate old rubber pad from electronic board. Do not remove battery. You can discard unusable, worn rubber pad.
3. Before you proceed with installing new pad, we suggest cleaning electronic switches if they are **clogged with dirt** like in the picture on the left. For instruction how to clean switches please visit our website at [www.polmex.com.au](http://www.polmex.com.au) or follow our link at <http://polmex.com.au/problemSwitches.html>





4. To fit new Silicone pad in your remote, stretch it over electronic board first.



5. Next position new pad in shell part containing button cut outs. You need to slide in bottom part of the pad first, so it presses on metal insert and holds pad in position firmly. Finish off by pushing pad thru respective key buttons cut outs till pad is correctly positioned.



Buttons should be positioned in cut outs of plastic shell as in the picture on the left.



6. Next close your shell aligning it at the bottom first. When top and bottom part of the shell are latched correctly, you can close whole case and screw it using small Phillips screwdriver.



Once button replacement is finished, remote will work straight away with **no need for re-programming.**